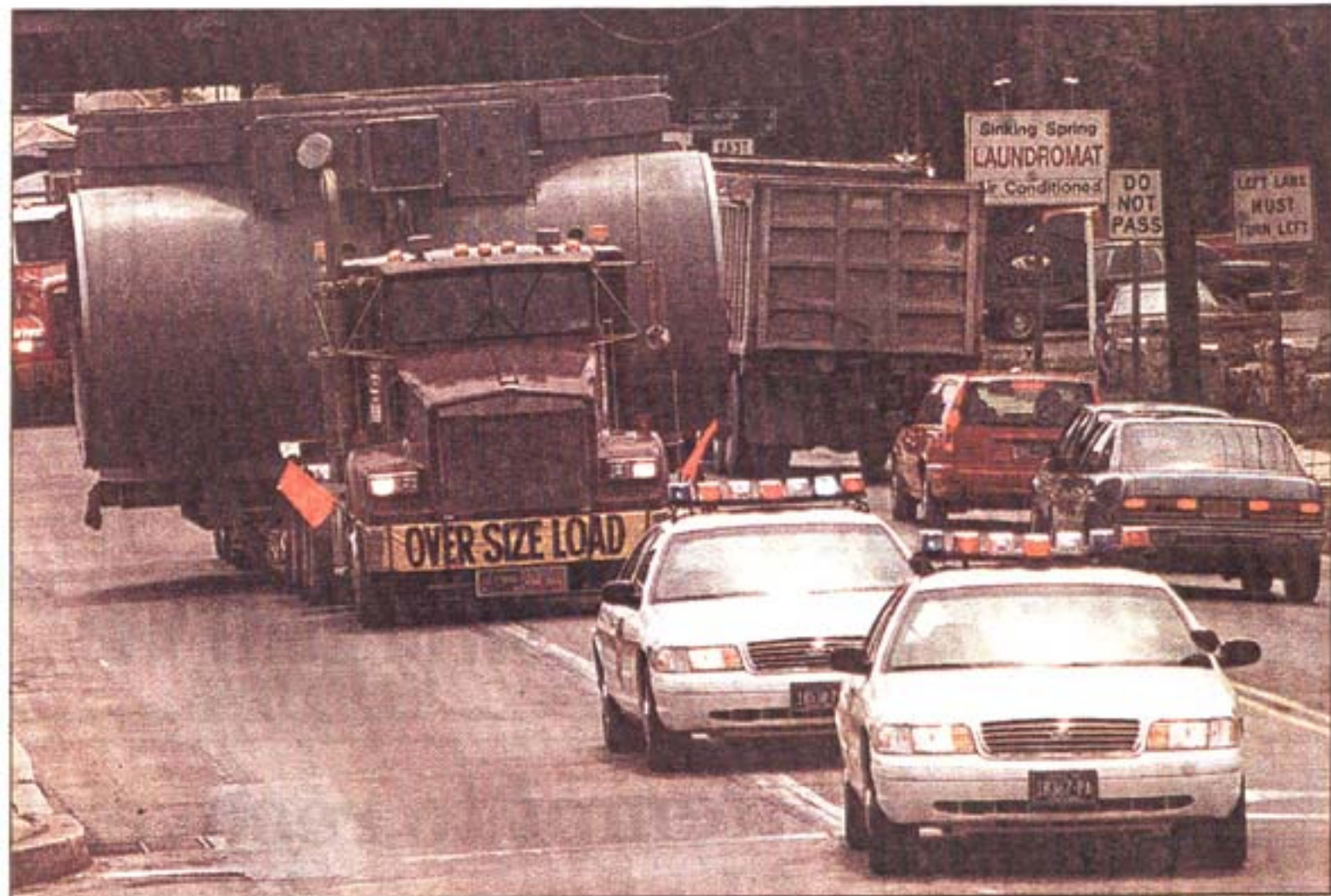


# Gridlock and load in Berks



Eagle/Times: Tony Fiorini

With a double police escort leading the way, a truck loaded with the largest piece of a 37-ton furnace slowly makes its way Friday on Shillington Road through Sinking Spring. The piece, fabricated by Penn Iron Works, is 17 feet wide and 10 feet high, and destined for a steel company in Michigan. See story, Page D6.